



MONTHLY MEMBERSHIP PROGRESS REPORT

District 2 T3

Results as of: 12/31/2017

GMT: JOE AL PICONE

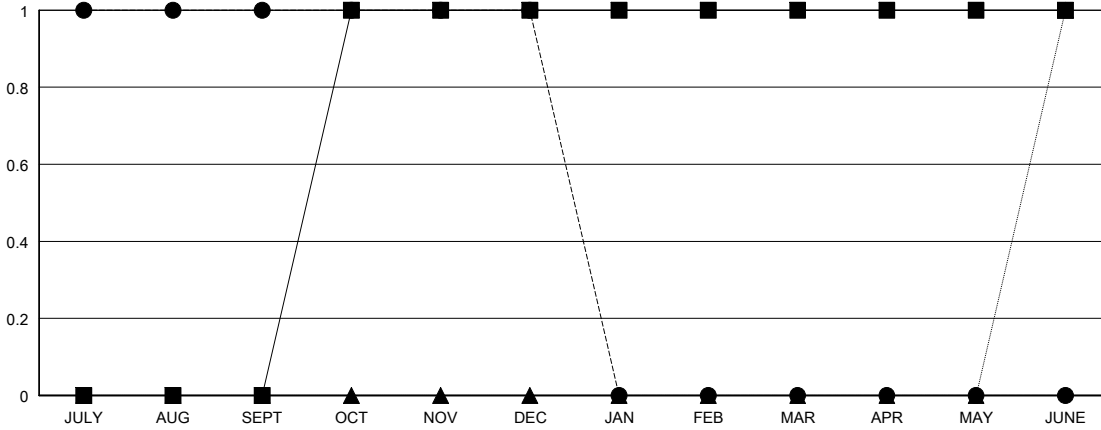
LOCATION TEXAS

GMT CA

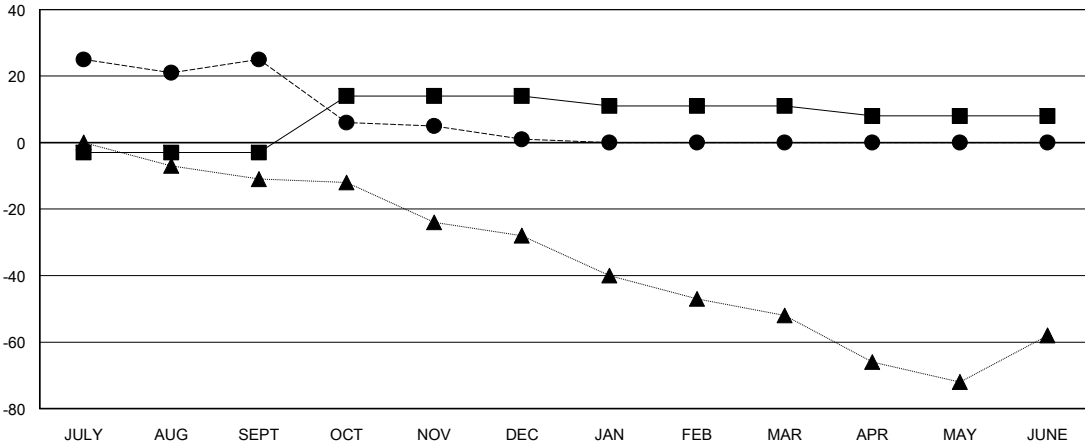
Clubs			
RESULTS FOR 2017-2018			
QUARTER	NEW CLUB GOAL	NEW CLUBS	DROPPED CLUBS
JULY/AUG/SEPT	0	1	0
OCT/NOV/DEC	1	0	0
JAN/FEB/MAR	0	0	0
APR/MAY/JUNE	0	0	0

Members			
RESULTS FOR 2017-2018			
QUARTER	MEMBER GROWTH NET GOAL	MEMBER GROWTH ACTUAL	DROPPED MEMBERS ACTUAL (including transfers)
JULY/AUG/SEPT	-3	80	49
OCT/NOV/DEC	17	18	40
JAN/FEB/MAR	-3	0	0
APR/MAY/JUNE	-3	0	0

GOALS AND ACTUAL NEW CLUBS CUMULATIVE



GOALS AND ACTUAL MEMBERS CUMULATIVE



DROPPED CLUBS: 0

15 CLUBS OF 33 ADDED 1 OR MORE NEW MEMBERS

GENDER DISTRIBUTION	
MALE	440 (59.38%)
FEMALE	301 (40.62%)
Women Percentage Fiscal Year Goal: 30%	

DROPPED MEMBERS	
DECEASED	7
CLUB CANCELLED	0
OTHER	82
TOTAL	89

[CLICK HERE FOR CUMULATIVE MEMBERSHIP DATA](#)

TOTAL FAMILY UNIT MEMBERS	102
FAMILY MEMBERS PAYING HALF DUES	53